

**MAKERERE**



**UNIVERSITY**

**COLLEGE OF ENGINEERING, DESIGN, ART AND TECHNOLOGY**

**MARGRET TROWEL SCHOOL OF INDUSTRIAL AND FINE ART**

**TOPIC**

**DERIVING AN INSPIRATION FROM A HIBISCUS FLOWER TO CREATE A DINNER DRESS**

**BY**

**ACHAM SHARON ERIMU**

**20/U/3837/PS**

**2000703837**

**SUPERVISOR**

**ASSOC. PROF. TUMUSIIME AMANDA**

**A RESEARCH REPORT SUBMITTED TO THE MARGRET TROWELL SCHOOL OF  
INDUSTRIAL AND FINE ARTS FOR THE FULFILMENT FOR THE AWARD OF A  
BACHELORS DEGREE IN INDUSTRIAL AND FINE ARTS**

**AUGUST 2022**

**APPROVAL**

This research report has been submitted for examination with my approval as university supervisor.

SIGNATURE: .....*Amanda*.....

DATE: .....*15<sup>th</sup> August 2022*.....


**ASSOC. PROF TUMUSIIME AMANDA**

**DECLARATION**

**I, ACHAM SHARON ERIMU** declare that this research report is in my personal efforts. It has never been presented to any university or institution of higher learning for the award of a degree or its equivalent.

**ACHAM SHARON ERIMU**

**20/U/3837/PS**

**SIGNATURE:** ..... 

**DATE:** ..... 15<sup>th</sup> - Aug - 2022 .....

## **TABLE OF CONTENT**

<b>APPROVAL.....</b>	<b>02</b>
<b>DECLARATION.....</b>	<b>03</b>
<b>CHAPTER ONE</b>	
<b>1.0 INTRODUCTION.....</b>	<b>07</b>
<b>1.1 BACKGROUND.....</b>	<b>07</b>
<b>1.2 PROBLEM STATEMENT.....</b>	<b>08</b>
<b>1.3 PURPOSE OF THE STUDY.....</b>	<b>08</b>
<b>1.4 OBJECTIVES.....</b>	<b>08</b>
<b>1.5 RESEARCH QUESTIONS.....</b>	<b>08</b>
<b>1.6 SIGNIFICANCE OF THE STUDY.....</b>	<b>08</b>
<b>1.7 SCOPE OF THE STUDY.....</b>	<b>09</b>
<b>CHAPTER TWO</b>	
<b>2.0 LITERATURE REVIEW.....</b>	<b>10</b>
<b>CHAPTER THREE</b>	
<b>3.0 METHODOLOGY.....</b>	<b>16</b>
<b>3.1 INTRODUCTION.....</b>	<b>16</b>
<b>3.2 RESEARCH DESIGN.....</b>	<b>16</b>
<b>3.3 STUDY POPULATION.....</b>	<b>16</b>
<b>3.4 STUDY AREA.....</b>	<b>16</b>
<b>3.5 POPULATION SAMPLES.....</b>	<b>16</b>
<b>3.6 DATA COLLECTION METHODS.....</b>	<b>16</b>

## **CHAPTER FOUR**

<b>4.0 INTRODUCTION.....</b>	<b>18</b>
<b>4.1 Possible fabrics that are suitable for making a dinner dress.....</b>	<b>18</b>
<b>4.2 Photographic images of the hibiscus flower.....</b>	<b>19</b>
<b>4.3 Drawing of the hibiscus flower.....</b>	<b>20</b>
<b>4.4 Photographic images of dinner parties and different dinner dresses.....</b>	<b>21</b>
<b>4.5 Developing the hibiscus flower images into different dress designs.....</b>	<b>22</b>
<b>4.6 CHALLENGES.....</b>	<b>25</b>

## **CHAPTER 5**

<b>5.0 Introduction.....</b>	<b>26</b>
<b>5.1 Process.....</b>	<b>26</b>
<b>5.1.0 The inspiration.....</b>	<b>26</b>
<b>5.1.1 Different parts of the hibiscus flower.....</b>	<b>27</b>
<b>5.1.2 Different designs developed.....</b>	<b>29</b>
<b>5.1.3 Colors I chose.....</b>	<b>29</b>
<b>5.1.4 Decorative techniques used.....</b>	<b>30</b>
<b>5.2.5 The fabric I chose.....</b>	<b>30</b>
<b>5.1.6 The drafts of the design.....</b>	<b>30</b>
<b>5.1.7 Color application.....</b>	<b>31</b>
<b>5.1.8. Final presentation of the design.....</b>	<b>32</b>
<b>5.2 The production process.....</b>	<b>32</b>
<b>5.2.0 Marking the fabric.....</b>	<b>33</b>

<b>5.2 .1 Cutting the fabric.....</b>	<b>33</b>
<b>5.2.2 Joining the fabric .....</b>	<b>34</b>
<b>5.2.3 The final outlook.....</b>	<b>35</b>
<b>5 .3 Conclusion .....</b>	<b>36</b>
<b>References.....</b>	<b>37</b>

## **CHAPTER ONE**

### **1.0 INTRODUCTION**

Fashion design is the art of applying designs, esthetics, clothing construction and natural beauty to the fabric and its accessories. It can be influenced by culture, inspirations and different trends and styles. It also varies over time and place.

A fashion design process is an approach used by fashion designers to breakdown an inspiration into a garment that can be worn to an occasion.

### **1.1 BACKGROUND OF THE STUDY**

A hibiscus flower is a genus of flowering plants in the mallow family, Malvaceae. The genus is quite large, comprising of several hundred species that are native to warm temperature, subtropical and tropical regions throughout the world. The species are known for their large, showy flowers and those species are commonly known simply as "hibiscus" or less widely known as rose mallow. Other names include hardy hibiscus rose, rose of Sharon and tropical hibiscus.

The hibiscus flower meanings include ephemeral beauty, romantic love and passion, friendship, hospitality and joy. The hibiscus originated in Asia and then made its way to other warm places around the world like New Zealand, Hawaii, Caribbean among others. Not only are hibiscus flowers considered beautiful, they have a significant spiritual meaning in many cultures.

*Hibiscus rosa-sinensis* was first discovered in Asia. Botanists are not really certain about the exact location since no wild stands of the plant have been found growing anywhere. Where ever it originated, it was brought back to Europe by explorers in the 1700s.

The hibiscus flower symbolizes; femininity, romantic love and passion, sincerity, ephemeral beauty, joy, friendship and hospitality.

Dinner party is a social occasion at which a group of people (usually a small group) are invited to have a dinner together and spend the evening at someone's house. Dinner is the main meal of the day taken either around midday or in the evening.

## **1.2 . PROBLEM STATEMENT**

The hibiscus flower has inspired many garment designs and some designers go further and use it as a print as well. Still more garments inspired by the flower are being constructed therefore there are endless designs that could be got from the flower hence the need to find out how one can derive and inspiration from the start.

## **1.3. PURPOSE OF THE STUDY**

This study will show how a dinner dress can be derived from a hibiscus flower.

## **1.4. OBJECTIVES OF THE STUDY**

- To breakdown the drawing of a hibiscus flower into a design for a dress.
- To develop an idea or a design from a hibiscus flower.
- To know a suitable fabric for a dinner dress.

## **1.5. RESEARCH QUESTIONS**

- What inspirations or ideas can be got from a hibiscus flower?
- What kind of outfit can be worn to a dinner party?
- What kind of fabric can be used to make the dinner dress?

## **1. 6. SIGNIFICANCE OF THE STUDY**

This study will provide knowledge about the hibiscus flower and how one can use a hibiscus flower as inspiration to come up with beautiful designs.

## **1.7. SCOPE OF THE STUDY**

### **1.7.1. Geographical scope**

The study will be done with at the Margaret Trowell School of Industrial and Fine arts (MTSIFA) which is in Makerere University and Kiyembe which is next to Nakasero Market in Kampala where different fabrics are sold.

### **1.7.2. Time Scope**

This study will be carried out in 2022.

### **1.7.3. Content Scope**

This study will look at the different designs for dinner dresses that can be got from a hibiscus flower and assess a suitable fabric that will be used to make the dinner dress.

## CHAPTER TWO

### 2.0 LITERATURE REVIEW

#### Introduction

In this chapter, there will be different sources of data that is to say both secondary and primary, but mostly from scholars, website and library books. It is based on the different fabrics used by the fashion students to design a dinner dress and their characteristics.

The different fabrics used by fashion students at MTSIFA include;

Chiffon, Satin, Silk, Velvet, Nylon

Characteristics of the fabrics

#### SATIN

Satin is a type of weave featuring a remarkably smooth and glossy face side. Most often created out of silk, silk satin fabric and is renowned as the first choice for evening dresses.

This fabric comes in a range of different weights and has a smooth and lustrous surface that is very attractive. This weave originated over 2,000 years ago in the Chinese port of Quanzhou and eventually spread from Asia to the west. Historically, satin was used for upholstery — for example, Louis XIV used it to cover his ornate furniture in the Palace of Versailles. These days it is commonly used for evening gowns, lingerie, boxer shorts, ballet shoes, hats, ties and bedding. Coat lining fabrics are also often made from satin, as the smooth surface allows the coat to glide easily over the fabrics beneath it.

Satin typically has one side that is glossy and one side that is dull.

The fabric is smooth and falls dramatically, making it appear luxurious and seductive when worn in the form of a gown.

Satin that is made from pure silk is hypoallergenic and very breathable.

Satin fabric is one of the best choices for luxury wear. With this fabric, you don't have to go all out with your design, embroidering it with myriads of crystals or sequins. Your dress may have a very simple cut,

but if made in satin it'll look expensive and elegant. Satin is ideal for making: Evening gowns, Wedding dresses, Corsets, Skirts, Blouses, Shirts, Loungewear, Lingerie, Underwear, Inner lining.

Satin is a hot favourite in dressmaking, but there are lots of ways one can use it to create stylish and sophisticated pieces. Think about Neckties, Hats, Ballet shoes, Athletic shorts, Gloves, Neckbands, Sashes, Scarves, Brooches, Purses

Satin ribbons will add a touch of luxury to any design, whether it's a dress, a hat or a pillow cover. Which brings us to another way of using satin like bed sheets, lightweight upholstery, interior finishing and luxurious handkerchiefs.

<https://tissura.com/articles/satin-fabrics>

According to the research above, satin has a luxurious appearance and this enables the fashion students to create elegant outfits for a dinner party.

## CHIFFON

Chiffon is a term that is used to refer to a wide variety of different types of fabrics that all share similar qualities. Typical characteristics of chiffon fabric include:

Sheer: Chiffon fabric has a sheer, transparent appearance, and when held under a magnifying glass, it looks like a fine net or mesh.

Rough feel: There are slight puckers in chiffon due to the alternating s-twist and z-twist yarns.

Stretch: Chiffon has a slight spandex-like feel as a result of being woven in different directions. Silk chiffon has slightly more stretch than polyester chiffon, as silk is naturally more pliable.

Strong: Chiffon fabric, both silk and synthetic, is extremely strong as a result of the twists of the yarns and the tight weave of the fabric.

Shimmery: Chiffon has a shimmery surface. Silk chiffon has the most shimmer, while cotton chiffon is more matte.

"Types of Chiffon and Crepe Fabric | Comfort" <https://www.comfortworld.co.uk/long-live-clothes/woven-fabric-types-crepe-and-chiffon.html>

Chiffon is used to create outfits like; evening gowns, scarves and sashes, blouses, lingerie, home décor among others.

"What Is Chiffon Fabric? Learn About the Characteristics of This Luxury Fabric and How Chiffon Is Made - 2022 - MasterClass" <https://www.masterclass.com/articles/what-is-chiffon-fabric-learn-about-the-characteristics-of-this-luxury-fabric-and-how-chiffon-is-made#what-is-chiffon-used-for>"

According to the research above, chiffon has a beautiful drape and shimmery appearance which enables fashion students to create and think of outfits like evening wear, wedding dresses, and high fashion dresses. The material is can also be used as an overlay on another fabric to create dimension and add volume to the garment.

## SILK

### Properties and Characteristics of Silk

By: Walter Ballenberger

"Cultivated silk from the Bombyx mori silkworm, which is and has always been the most common type of silk used, has a number of interesting and desirable properties that have been admired for over 5,000 years.

First of all, silk takes well to dyes, both natural and synthetic, which results in colorful fabrics. Another property of silk is its soft feel, and it retains its shape well, even after having been stretched. In appearance silk has a sheen and luminosity that makes it look luxurious. Since silk production is labor intensive and costly it has often been used by royalty and people of wealth for centuries, and it has in fact sometimes become a symbol for wealth and achievement. In England, for example, when an attorney reaches a certain status and earns the honor of being a QC (for Queen's Council), he or she is said to "take the silk". From then on they will wear a silk gown during court proceedings. In fact silk dresses from pure English silk are normally worn in royal weddings in England, and this is a tradition that has been upheld for centuries. There are still small silk making operations located there in modern times.

Silk has the property of being a very flexible material. For example, a silk scarf can readily be pulled through a wedding ring, and it will quickly retake its original shape without a lot of wrinkling. It is light in

weight, and it can be easily folded. Silk scarves are excellent for women who travel, as a lady can change her look by changing scarves and can get away with carrying fewer outfits than she normally might wear at home. In addition, silk tends to fall naturally and hangs delicately when used as clothing. This gives it an appeal over other fabrics that are more stiff and rigid. In addition, silk holds its structural integrity and will not rot. Silk is also more heat resistant than many other fabrics, including wool, for example, and is actually rather difficult to burn.

One remarkable property of silk is its high tensile strength and its fibers will not easily be torn or damaged. It is also an elastic material that can be stretched and then will recover to its original size unless stretched beyond 20-25% of its original length. It has been used in the past in making guy ropes to take advantage of this characteristic.

Silk clothing keeps one cool in the summer, and it provides surprising warmth in the winter and is often used as an insulation layer in different types of clothing or even in sleeping bags. Silk can absorb a fairly significant amount of moisture before it feels wet.

Silk can be woven together with other fabrics in blends, and it is most often used in articles of clothing such as dresses, pants, sweaters, gowns, and shirts, for example. Silk ties for men have a look and feel that is exceptional, and many men prefer silk ties and use them almost exclusively."

"Properties and Characteristics of Silk - Fibre2Fashion" <https://www.fibre2fashion.com/industry-article/1710/properties-and-characteristics-of-silk>

According to the research above, silk is very flexible and shiny which makes it suitable for ties, scarves, bridal and formal wear because it has a beautiful drape.

## VELVET

"Velvet Fabric Types, Characteristics and End Uses" <https://leartex.com/velvet-fabric/>

Velvet is a type of woven tufted fabric in which the cut threads are evenly distributed. Velvet is a soft, luxurious fabric that is characterized by a dense pile of evenly cut fibers that have a smooth nap.

Due to the characteristics of the short pile fibers, velvet Fabric has a beautiful drape and a unique soft and shiny appearance.

"Characteristics of velvet fabric - Knowledge - Haining Juncheng Textile Co.,Ltd"

<http://m.supplierfabric.com/info/characteristics-of-velvet-fabric-30000857.html>

In the velvet fabric, the fluff or the loops are tightly arranged, the color is elegant, firm and wearable, and it is a good material for clothing, hats and decorations. Not only has a strong comfort, but also gives a feeling of glory and luxury, very cultural.

A raw silk, and the silk is used as the warp, and the cotton yarn is the weed of the weed. Use a silk or rayon to make a loop. Both warp and weft are first degummed or semi-degummed, dyed, and weaved after twisting. Light and durable, gorgeous and not seductive, luxurious and generous, born with a noble atmosphere.

According to the research above, velvet is a soft luxurious fabric that is suitable for designing evening wear or dinner dresses.

## NYLON

The characteristics that have made nylon fabric in particular popular include:

Rugged durability

Stretch and elasticity

Resistant to tears and abrasions

Resistant to heat and water

Melts instead of catching fire

Nylon is one of the most cost-effective fabrics due to its readily available ingredients, making it ideal for sewers or up and coming apparel businesses. Nylon fabrics come in a wide variety of stretch and are great wicking fabrics to keep wearers fresh! They are perfect for leotards, jerseys, swimsuits, and other activities requiring freedom of movement. As you can tell, nylon fabric is a fresh, durable, and extremely low-maintenance option in the textile industry. Nylon and Spandex fabric gives users the movement they need while being a cost-effective fabric not to break the bank.

"What is Nylon Fabric? | Fabric Knowledge | Pine Crest Fabrics Blog"

<https://pinecrestfabrics.com/fabric-knowledge/why-nylon/>

According to the research above, nylon is very strong and flexible fabric fabric that is suitable for garments worn during vigorous activity.

## CHAPTER THREE

### 3.0. METHODOLOGY

#### Introduction

This chapter shows my research plans, that is to say the type of research I will do, the area of study, samples and how I will collect information.

#### 3.1. RESEARCH DESIGN

This research is a qualitative research. This means the data is collected through observations, interviews, questionnaires/ surveys, using secondary research among others. The study is to focus on the fabrics that can be used by fashion designers at MTSIFA to make a dinner dress.

#### 3.2 STUDY POPULATION

The target population for this study is the students offering fashion design in year 2 and year 3 at MTSIFA.

#### 3.3. STUDY AREA

This study is carried out at MTSIFA where I am able to contact the fashion design students and Kiyembe where the fabrics are got.

#### 3.4. POPULATION SAMPLES

For this study, I used a maximum number of 25 fashion students from the fashion class of year two and year three to represent the rest to the fashion designers.

#### 3.5. DATA COLLECTION METHODS

The following are the methods I used to collect data;

- QUESTIONNAIRES (SURVEYS)

Questionnaires were distributed with open ended questions to the fashion designers to give their thoughts about the fabrics.

- SECONDARY RESEARCH

This involved the collecting of existing data in the form of texts, images audio or video recordings.

- OBSERVATIONS

This involved recording what I saw, heard or encountered during my research and converted into detailed notes.

- INTERVIEWS

This involved personally asking people questions in a one-on-one conversation.

## CHAPTER FOUR

### DATA ANALYSIS, INTERPRETATION AND PRESENTATION

#### 4.0 INTRODUCTION

In this chapter, I discuss the results of some of the findings from the field about the hibiscus flower, how it inspires clothes, and different fabrics. I utilized images and details from websites, photographic illustrations and tables to enhance the findings. The data collected in this chapter is discussed in the sections according to the objectives in chapter one.

#### 4.1 Possible fabrics that were suitable for making a dinner dress.

- Velvet  
Velvet is a soft, luxurious fabric that is characterized by a dense pile of evenly cut fibers that have a smooth nap. Velvet has a beautiful drape and a unique soft and shiny appearance due to the characteristics of the short pile fibers. It is a popular fabric for evening wear and dresses for special occasions.
- Satin  
Satin is a soft fabric with a lustrous surface on one side and a duller surface on the other side. Satin is shiny, soft, and elastic with a beautiful drape which is result of the satin weaving technique.
- Silk  
Silk is a natural fiber produced by insects as materials for their nests and cocoons for example silk worms, weaver ants among others. Silk is known for its luster, shine, strength, durability, soft feel and elegant appearance.
- Chiffon  
Chiffon is a lightweight sheer fabric of plain weave with a relatively strong, balanced fabric and can be dyed or printed on for use in dressing. Chiffon also drapes softly on the human body.
- Nylon  
Nylon is known as one of the most useful synthetic fiber in the world. It's a plastic in everyday products but is also fibers for making fabrics. Nylon is a strong fabric and has abrasion resistance, it also a fantastic elastic recovery and the ability to accept dyes.

4.2 Photographic images of the hibiscus flower

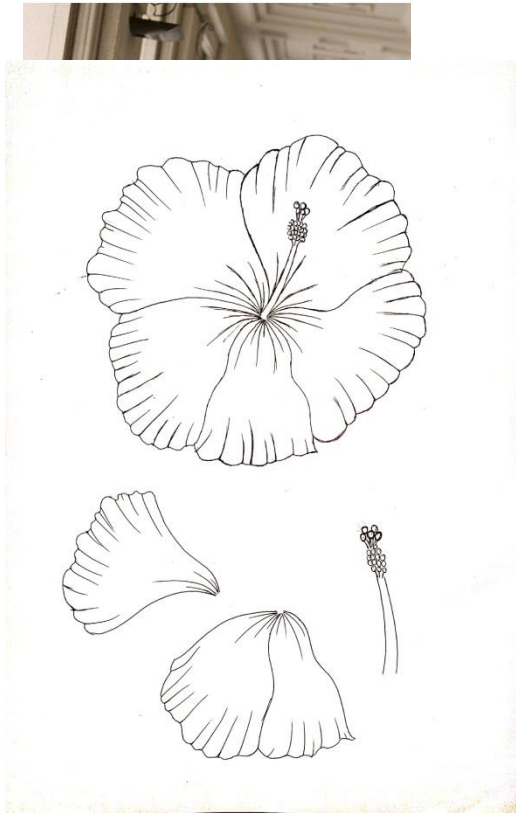


**4.3 Drawings of the hibiscus flower**



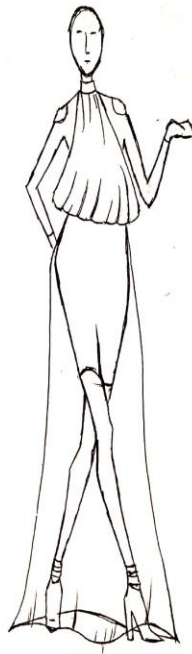
4.4 Photographic images of dinner parties and different dinner dresses



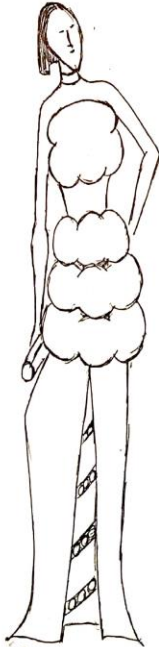


**4.5 Developing the hibiscus flower images into different dress designs**

INSPIRED BY THE PETALS



INSPIRED/DEVELOPED FROM ANOTHER HEADS AND STIGMA



**Table 1**

**Most preferred fabric by the fashion designers to make a dinner dress.**

<b>FABRIC NAME</b>	<b>FREQUENCY OUT OF 25</b>	<b>PERCENTAGE</b>
Satin	7	28
Silk	5	20
Velvet	9	36
Chiffon	3	12
Nylon	1	4
<b>Total</b>	<b>25</b>	<b>100</b>

36% of the fashion designers preferred to use velvet fabric to make a dinner dress, followed by satin fabric with 28%, then silk fabric with 20% and lastly chiffon fabric with 12% and nylon 4%, the least preferred fabric according to the data I collected in the table above.

**Table 2**

**Characteristics of the fabric**

Fabric name	Appearance	Drapery	Durability	Texture
Satin	shiny	High drape	strong	smooth
Silk	shimmery	High drape	strong	Smooth
Velvet	Luxurious	Moderate drape	strong	soft
Chiffon	Sheer, transparent	High drape	Strong	Rough
Nylon	lustrous	Moderate drape	Strong	Smooth

According to the table above, we see that velvet has a luxurious appearance, a moderate drape and a soft texture which is why it was preferred by most designers as compared to nylon that has a lustrous appearance, a moderate drape and a smooth texture.

In most cases, fashion designers opt for fabrics that give an elegant and expensive look for special occasions like a dinner party.

#### **4.6 CHALLENGES**

The funds and time required to carry out the research were a limiting factor for this research study since they were not readily available. Some fabrics were difficult to find and very expensive but with patience and persistence I was able to find them. Some fashion designers provided inadequate information on the knowledge they have about designing a dinner dress and also the fabrics.

## CHAPTER FIVE

### PROCESS, PRESENTATION AND CONCLUSION

#### 5.0 INTRODUCTION

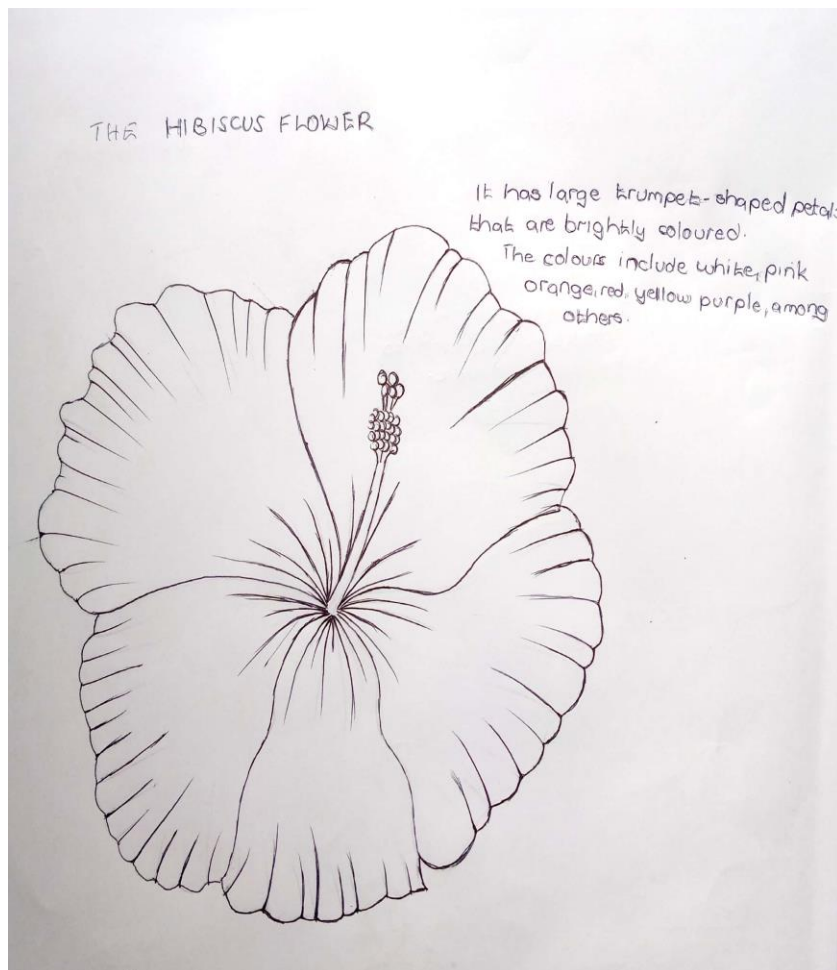
In this chapter show as the process of how the product discussed in the previous chapter was achieved guided by the research questions and interviews were used in the process of collecting data information. Below is the production process of the dinner dress and its final outlook.

#### 5.1 PROCESS

##### 5.1.0 The inspiration

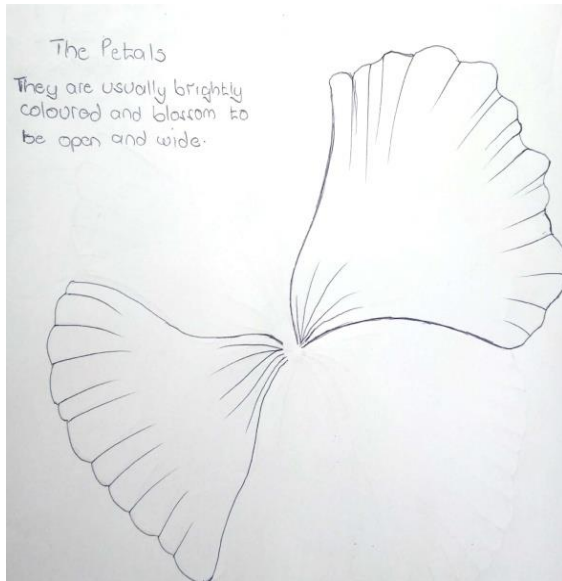
##### Hibiscus flower

My source of inspiration is a hibiscus flower. It's petals blossom into a trumpet shape as they open wide. It's petals are brightly colored and the pistil sticks out from the center of the petals.

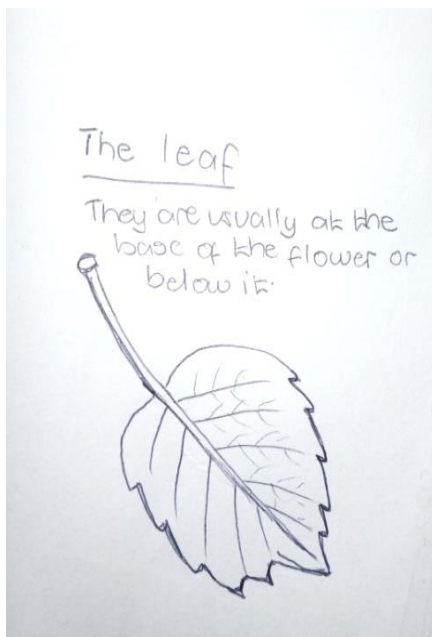


## 5.1.1 Different parts of the hibiscus flower

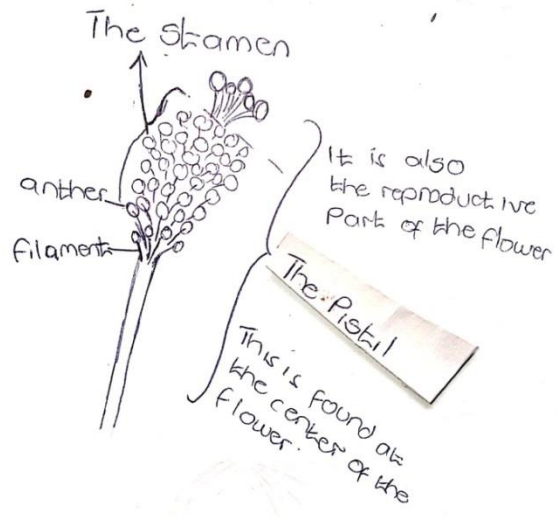
### The Petals



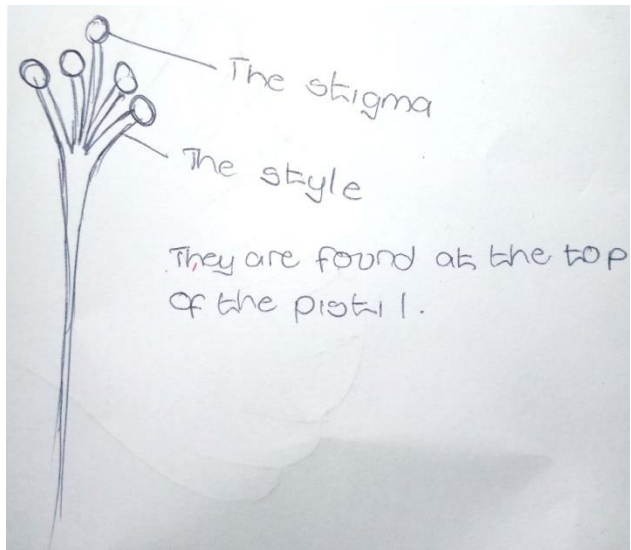
### The leaf



## The pistil



## The stigma and the style



The stigma



The style

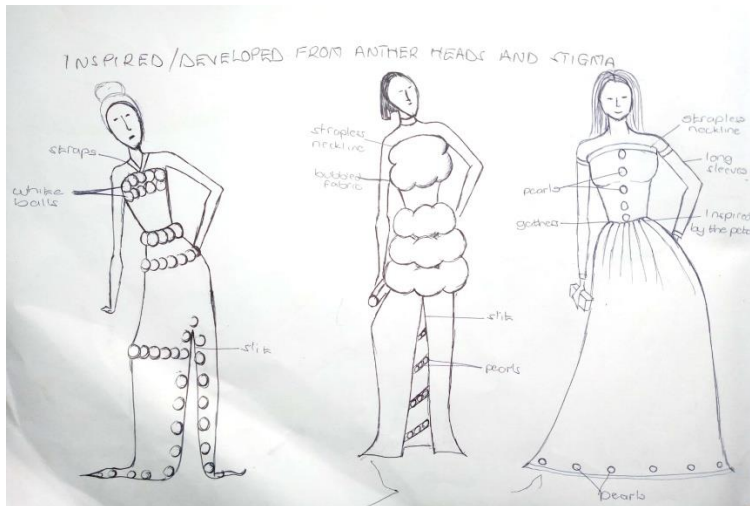


The anther heads

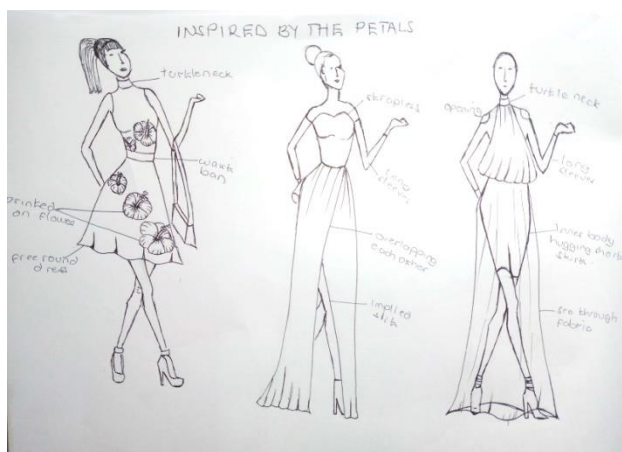


### 5.1.2 Different designs that I developed from my inspiration

These designs were developed from the shape of the anther heads and the stigma



These designs were developed from the texture of the petals



### 5.1.3 The colors I chose to use

**Red:** It represents love, passion and desire, these were reasons why I chose it. It also creates a feeling of excitement.

**Black:** It represents strength, authority and power. I chose it because I wanted the person wearing the garment to look powerful.

**Pink:** It represents love, kindness and femininity. This color is highly associated with women and this is the reason why I chose it.

### 5.1.4 Decorative techniques used;

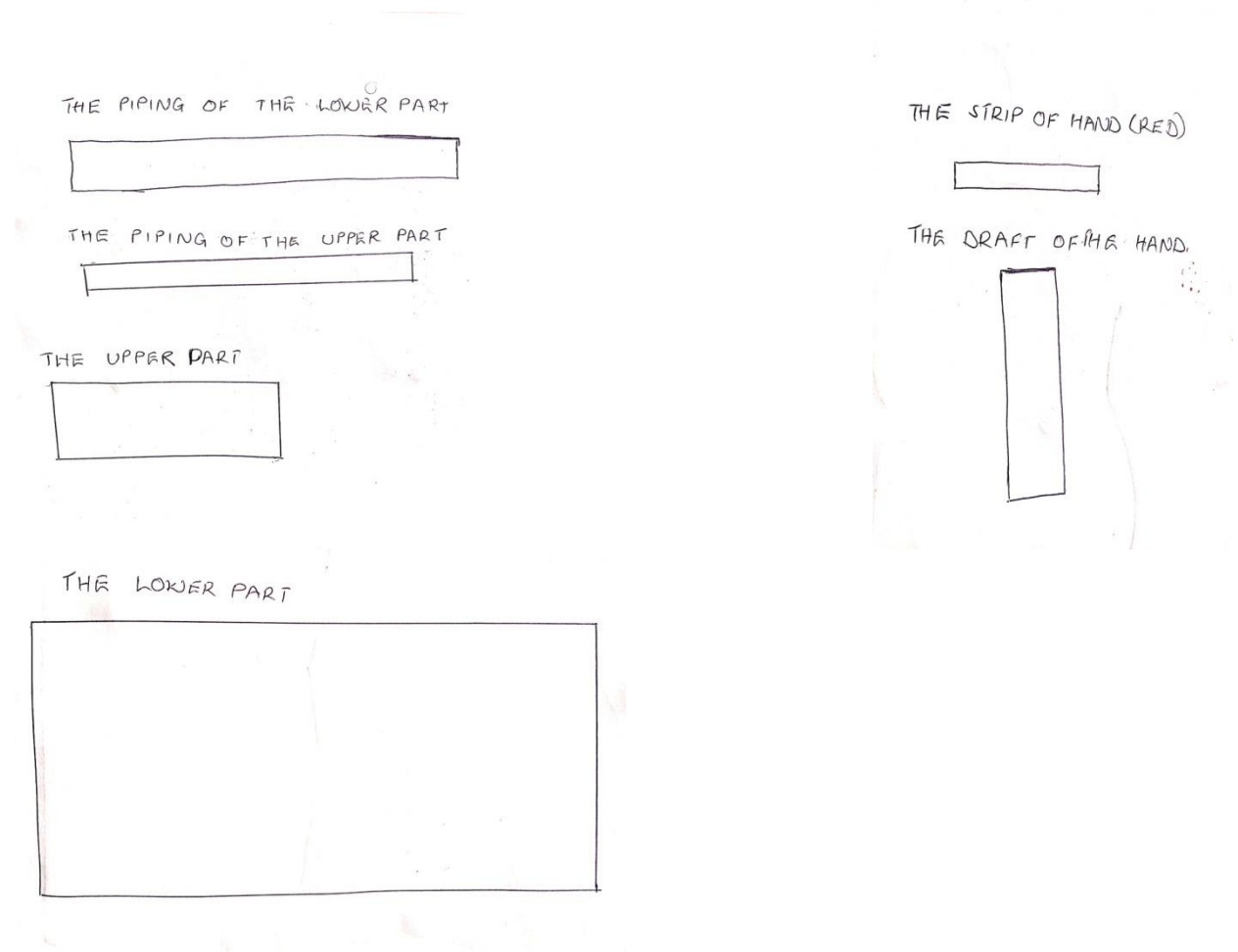
**Piping;** This is a trim or edging formed by sewing a thin strip of folded fabric and attaching it to the edges of a fabric. For my garment, I used a different colored fabric to create this technique ie the red colored fabric.

**Pearls;** These pearl beads symbolize wisdom gained from experience, bring truth forward , enhance integrity among others. This is why I used them to enhance the beauty of my garment design.

### 5.1.5 The fabric I used

Velvet; I used velvet fabric because it has a luxurious appearance that made the person wearing look very elegant and a soft texture that made the person wearing it comfortable.

### 5.1.6 The drafts of the different parts of the garment



### 5.1.7 Color application

At this stage, I got the design I chose and applied the different colors I wanted to use in order to help decide on a final color of fabric to buy.



After looking at this color application, I decided to use the black color for my design since it's easier to get in the fabric type I chose and it portrays confidence, boldness among others.

### **5.1.7 The final presentation**

This is where I present the garment design I have chosen, with the color I preferred to use. It also includes the accessories for the garment and how I wanted the final garment to look like.



### **5.2 THE PRODUCTION PROCESS**

This is the stage where I apply my design on the fabric I chose and include the fabric decorative techniques i chose. This is how I applied my design on the fabric and put it together at the end.

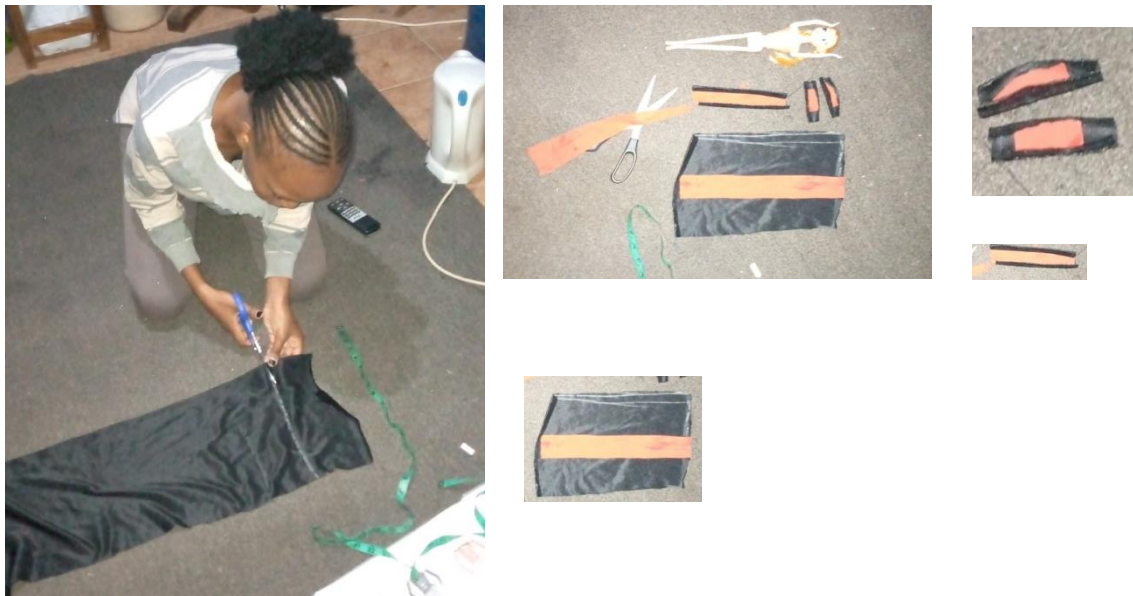
### 5.2.0 Marking the design on fabric

This is the stage where I used tailor's chalk to transfer the design on fabric.



### 5.2.1 Cutting out the different parts of the fabric

This is the stage where I used a fabric scissor to cut out the different parts of my designs from the fabric.



### 5.2.2 Joining the different parts of the garment

This is the stage where I used a sewing machine to join the different parts of the fabric together.



### 5.2.3 The final out look

This is the finally piece I made out of all these previous stages. I added white pearls to my garment o enhance it's beauty.



### **5.3 CONCLUSION**

In conclusion, a hibiscus flower can be used as an inspiration to achieve a beautiful dinner dress the flower. This is evident with the research made above.

Velvet fabric has a smooth texture and elegant appearance which looks good on a dinner dress but it's very expensive to buy and somehow hard to use because it's smooth texture. Generally it's a good fabric to be used to create a dinner dress. This is what I discovered from the research I made above.

## REFERENCES;

"Hibiscus - Wikipedia" <https://en.m.wikipedia.org/wiki/Hibiscus>

"Hibiscus Flower Meaning & Symbolism + Planting, Care & Uses | UniGuide"  
<https://www.uniguide.com/hibiscus-flower-meaning-symbolism/>

"Hidden Valley Hibiscus - Hibiscus History"  
<https://www.hiddenvalleyhibiscus.com/history/earlyhistory.htm>

"What Is Velvet? A Guide to the Different Types of Velvet - 2022 - MasterClass"  
<https://www.masterclass.com/articles/what-is-velvet#what-is-velvet>

"What Is Satin Fabric? A Guide to the Types, Characteristics, and Uses for Satin - 2022 - MasterClass"  
<https://www.masterclass.com/articles/what-is-satin-fabric-a-guide-to-the-types-characteristics-and-uses-for-satin#what-is-satin>

"Fabric Guide: What Is Silk? How to Use and Care for Silk Fabric - 2022 - MasterClass"  
<https://www.masterclass.com/articles/fabric-guide-what-is-silk-how-to-use-and-care-for-silk-fabric#what-is-silk>

"chiffon | plain weave | Britannica" <https://www.britannica.com/technology/chiffon>

"What is Nylon Fabric? | Fabric Knowledge | Pine Crest Fabrics Blog"  
<https://pinecrestfabrics.com/fabric-knowledge/why-nylon/>

"Fabric 101: Drape | Drape is one of the most important factors to consider when constructing a garment. Learn about 3 types of drape and our favorite fabrics for each! fabric.com Blog"  
<https://www.fabric.com/blog/fabric-101-drape/>

